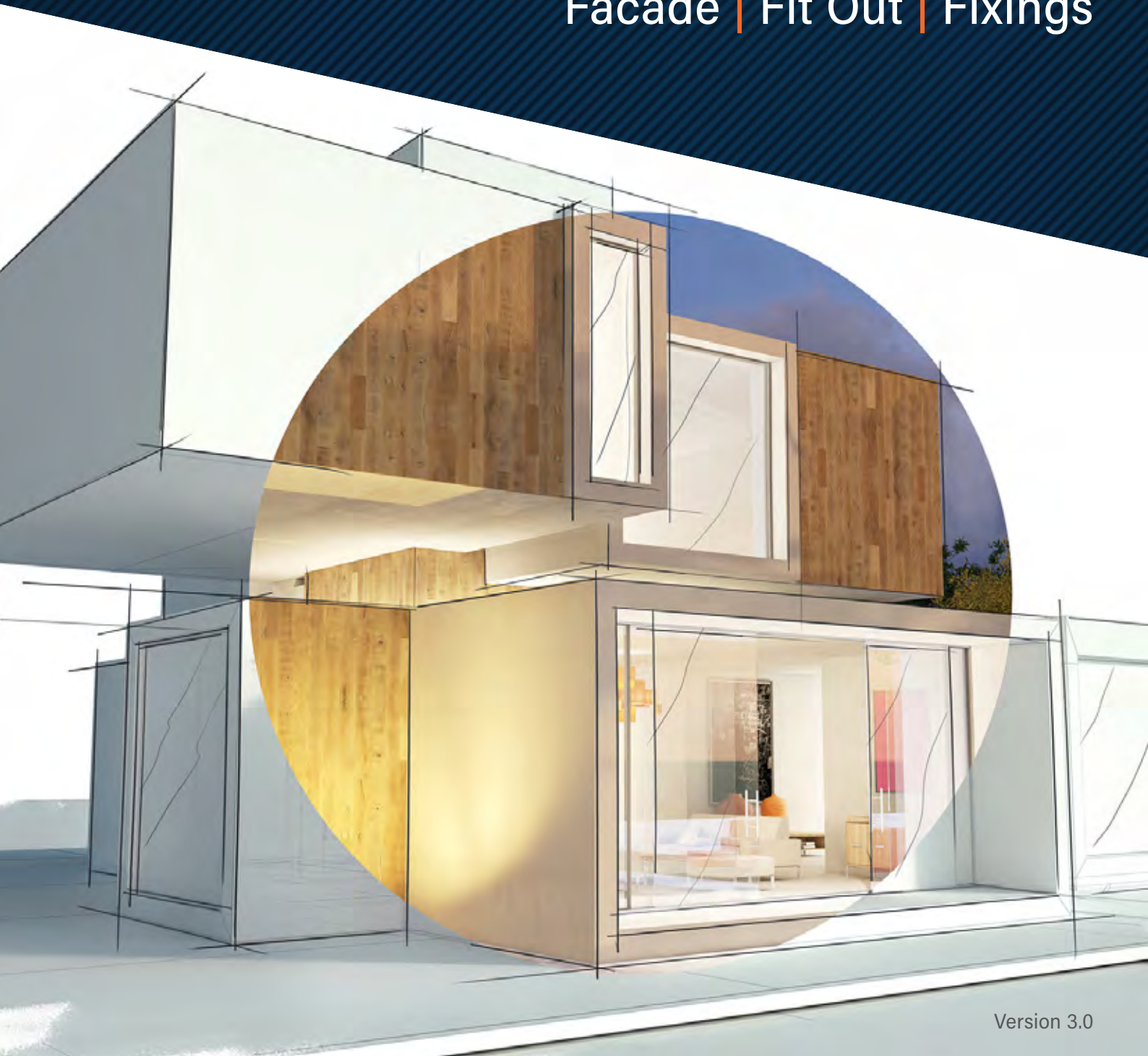


Product Portfolio

Facade | Fit Out | Fixings

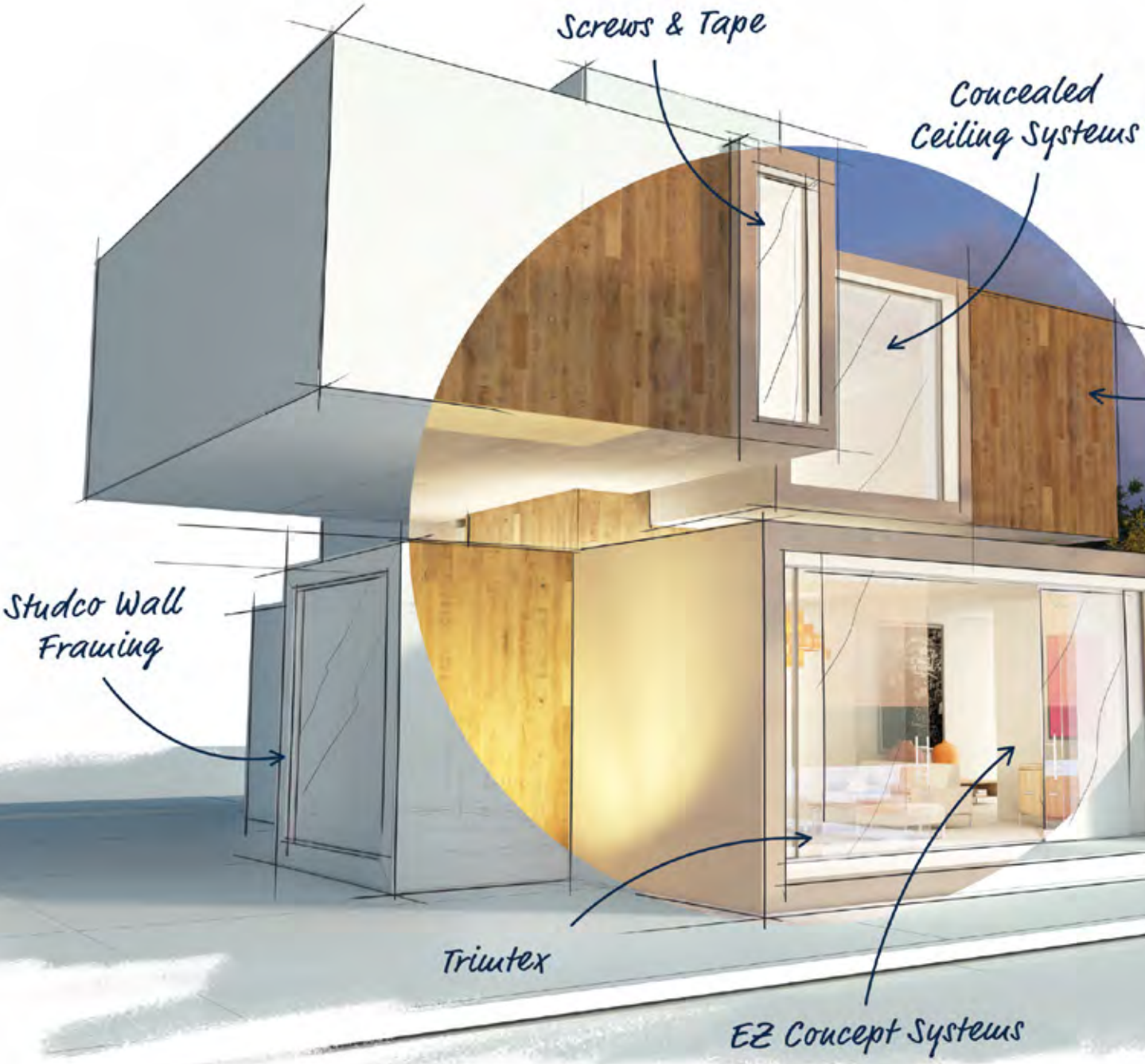


Version 3.0

Your build, made easy

1300 00 50 52

Trumark. Facade. Fit Out. Fixings.





*Alteria
Aluminium Systems*

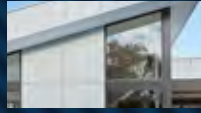
*Top Hats &
Facade Angles*

FACADE



Alteria Aluminium Systems

8-9



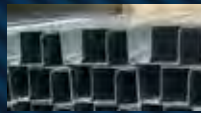
James Hardie

10-11



Cemintel

12-13



Top Hats

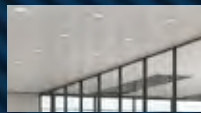
14-15



Building Membranes

16-17

FIT OUT



Ceiling Systems

18-21



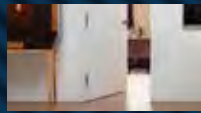
NCS Ceiling Tiles

22-23



Studco

24-25



EZ Concept

26-27

FIXINGS



Screws & Rivets

28-29



Abrasives

28-29



Tape & Sealants

28-29

About Trumark

Australian owned and with over 70 years serving customers, Trumark are specialist suppliers of facade, fit out and fixing systems.

With an extensive range and excellent stock holdings, we also supply the required tools and accessories to get the job done, so you can complete your project faster and easier.

With Trumark, it's your build, made easy.

Facade

With an extensive range of fire compliant Facade products to suit most build requirements, Trumark also supply all the system accessories from top hats to building membranes, all matched with excellent technical support.



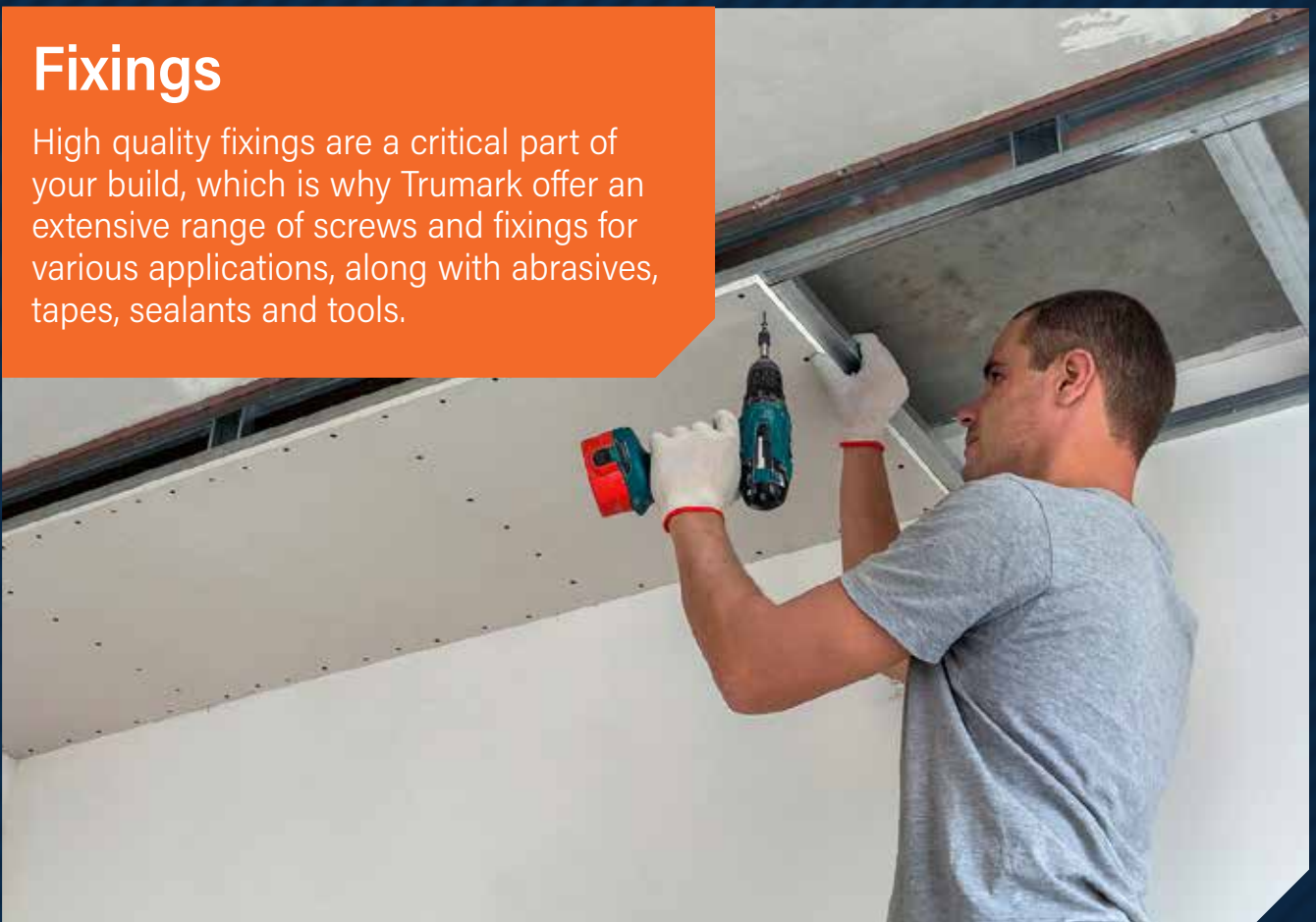
Fit Out

From drywall systems to plasterboard and architectural finishings, Trumark can supply all the components required for your build fit out. Our team can also offer specialised engineering support as required.



Fixings

High quality fixings are a critical part of your build, which is why Trumark offer an extensive range of screws and fixings for various applications, along with abrasives, tapes, sealants and tools.



Our Services & Deliveries

Services at a Glance



Central Warehouse
Location - Scoresby



Fibre Cement
Cutting Service



Engineering &
Tech Support



On Call
Support Team



Crane Truck –
Up to 4 levels



Fast Quotes



Pre-Order and
Collect Service



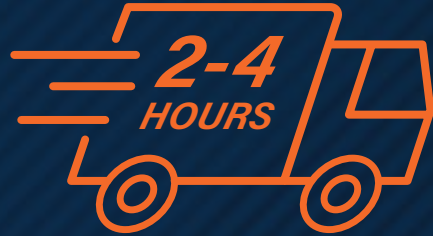
Pack & Pallet

Delivery Options



Standard Delivery

Guaranteed delivery
within 6 hours



Pronto[™] Delivery

Guaranteed delivery
within 2-4 hours



Delivery Guarantee

We promise your order will be delivered in full, within the agreed time, every time or we'll pay your delivery costs.*

*Delivery conditions apply. Visit: www.trumark.com.au/delivery-guarantee/

Pick Ups

Order pick ups are quick and convenient with Trumark.

Located in Scoresby, we are a two minute drive off Eastlink and only 7km from the Monash Freeway.



Alteria Aluminium Systems

With a range of proprietary aluminium batten and cladding profiles, Alteria Signature Aluminium Systems has been designed with all the complementary accessories and trims to ensure an easy installation.

The Alteria finishes range includes a wide selection of premium powder-coat colours, including realistic wood-look options plus many on-trend pearlescent and anodised-look colours.





Battens | Two-Piece System



Batten Cover 30 x 30mm



Batten Cover 30 x 50mm



Batten Cover 30 x 80mm



Batten Cover 30 x 120mm



Batten Base 30mm



Batten Cover 50 x 50mm



Batten Cover 50 x 100mm



Batten Cover 50 x 150mm



Batten Cover 50 x 200mm



Batten Base 50mm

Claddings | Interlocking System



Cladding 125mm



Cladding 180mm

Key Features

- > Premium powder coat finish
- > 5 Finish Range options
- > Realistic wood-look colours
- > On trend solid colours
- > Non-combustible
- > Lightweight
- > Low maintenance
- > Easy 2 piece click install system
- > Full accessories range

Warranty

15 Year System Integrity Warranty and a Finish Warranty. The warranty periods for the Finish Warranty is based on the Alteria Finish selected. See Warranty Document for details.

Fire Compliance:

- > AS/NZ1530.3-1999 - Spread of Flame Index 0
- > AS 1530.1-1994 - Certified to be non-combustible
- > BCA compliant: Meets BCA Deemed-to-Satisfy provision C1.9(e)(v) - Suitable to use where non-combustible materials are required.

For full range and accessories visit trumark.com.au/alteria

Fibre Cement

With over 45 years as a major distributor of James Hardie, Trumark are specialists in fibre cement building products. Leaders in their field, James Hardie offer an extensive range to suit all your building requirements.





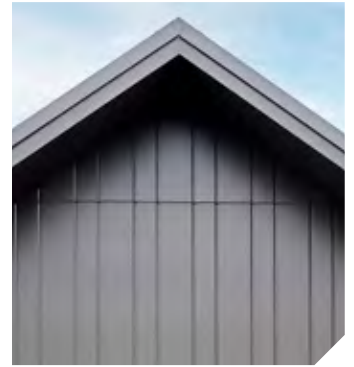
Axon™ Cladding



Brushed Concrete



Hardie™ Fine Texture Cladding



Oblique™ Cladding



Linea™ Weatherboard



Matrix™ Cladding



Stria™ Cladding



EasyLap™ Panel



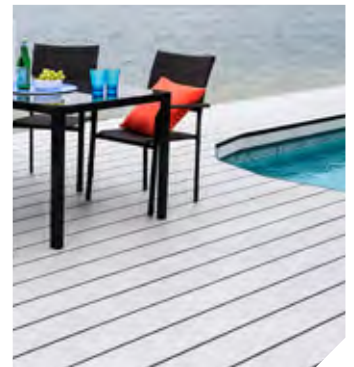
ExoTec® Building Facade Cladding



Villaboard™ and Versilux™ Linings



Secura™ Flooring



HardieDeck™

Trumark Fibre Cement Cutting Service

- > Cut-to-size panels
- > Edge profiling
- > Pre-finishing
- > Lamination and Fabrication
- > Boring, routing and profile cutting



Trumark also stock:

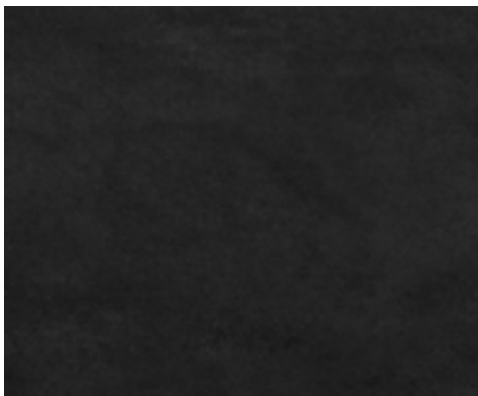
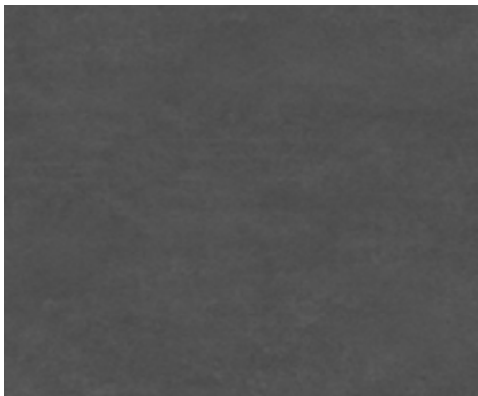
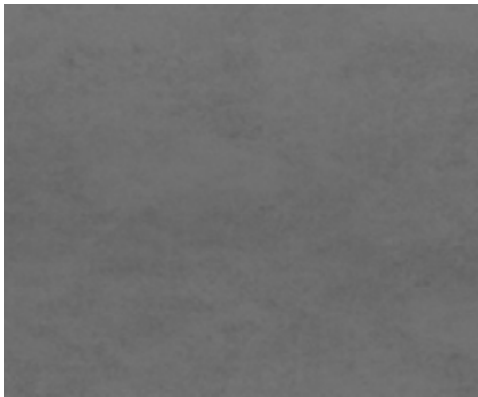
- > Axent™ Trim
- > Hardie™ Plank
- > Hardie™ Flex
- > Primeline™
- > Hardie™ Groove
- > RAB™ Board
- > Hardie™ Panel
- > Tile Underlay

For full range and accessories visit trumark.com.au/james-hardie

Fibre Cement

Cemintel Barestone prefinished cladding provides a natural, raw concrete appearance that blends seamlessly into its environment and adapts easily to modern, contemporary design. Perfectly suited to commercial applications, Trumark understands the requirements of the Barestone system, making your install simpler.





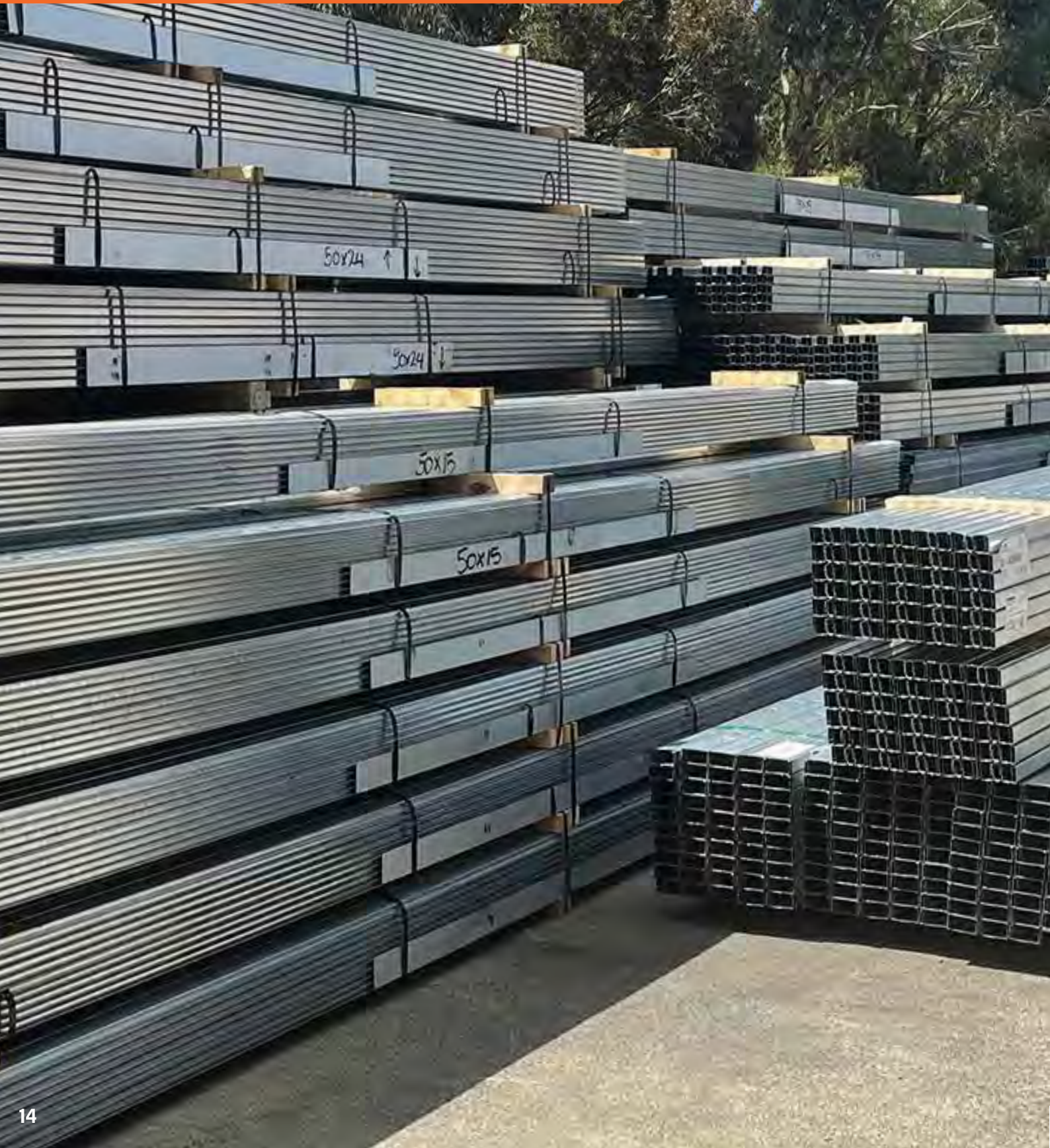
Barestone

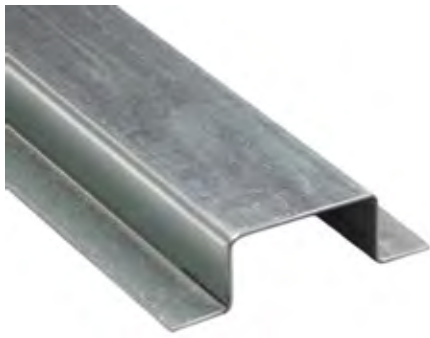
Barestone panels can be installed on steel or timber stud framing, or masonry/concrete, either horizontally or vertically, externally or internally. External panels are secured with either screws or colour matched rivets when fixing to steel framing, and colour matched screws when fixing to timber framing.

For full range and accessories
visit trumark.com.au/barestone/

Top Hats & Facade Accessories

Trumark are leading suppliers of top hats, framing and substrate materials. Our extensive range of top hats includes various sizes and steel thicknesses, matched with fast delivery and technical and engineering support.

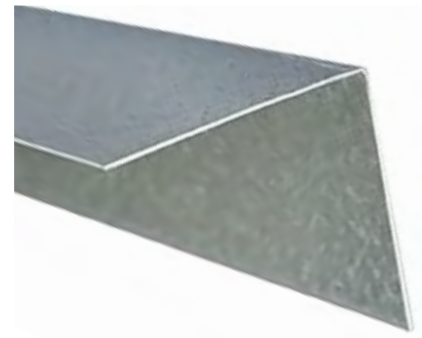




Top Hats



Roof Tops Hats



Facade & Backing Angles



Screws



Horseshoe Packers



Facade Brackets



Sealants



Adhesives



Tapes

Key Benefits

- > Extensive stock
- > Split packs
- > Fast deliveries
- > Quick lead time
- > Technical knowledge
- > Engineering services

Top Hat Range:

- | | | |
|--|---|--|
| <ul style="list-style-type: none"> > 50 x 15mm Top Hat > 50 x 24mm Top Hat > 50 x 35mm Top Hat > 50 x 50mm Top Hat | <ul style="list-style-type: none"> > 50mm Roof Top Hat > 64mm Roof Top Hat > 96mm Roof Top Hat > 120mm Roof Top Hat | <ul style="list-style-type: none"> > 75mm Roof Top Hat > D3 Top Hat > Joiner Top Hat |
|--|---|--|

trumark.com.au/top-hats-facade-accessories/

Building Membranes

Trumark understand the importance of quality building membranes to protect your project from the harsh Australian elements. With an extensive range of wraps and expert knowledge, we'll help your building perform at it's best.





Hardie Wrap



Proctor Wrap



Trumark Wrap



Tapes and Accessories

Key Features

- > Full range of specified building membranes and tapes available
- > Suitable for both commercial and residential applications
- > Allows insulation to perform at optimal level while limiting potential damage
- > Able to withstand up to 180 days UV exposure before cladding is installed
- > Fire rated options available

For full range and accessories visit trumark.com.au/fitout

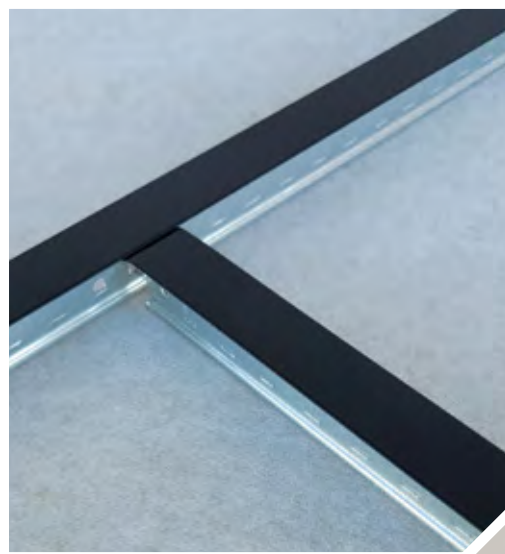
Ceiling Systems

Trumark offer a range of concealed and exposed grid systems that are engineered and manufactured to comply with all relevant Australian standards and codes and have been designed to suit a variety of different ceiling applications.

GT *ultimategrid*
EXPOSED CEILING SYSTEM

Trumark's GT Ultimate Grid is an innovative exposed grid ceiling system which is fast to install, high strength and fully demountable. Available in both Black and White options.

Pictured: GT Ultimate Grid combined with NCS Ridge ceiling tiles



V200 | 60mm Wide Furring Channel CONCEALED CEILING SYSTEM



The V200 concealed system is a multi-purpose 60mm wide furring channel that offers fast and functional ceiling installation.

A200 | 28mm Furring Channel CONCEALED CEILING SYSTEM



The A200 is a fully engineered 28mm furring channel concealed ceiling system that is flexible and secure. It easily clips together to form a suspension system that lining boards can be fixed to.

B200 | 23mm Furring Channel CONCEALED CEILING SYSTEM



The B200 is a high calibre 23mm furring channel concealed system that provides a fast, rigid and economical suspended ceiling solution.

SLIMCEIL[®] LOW CLEARANCE CEILING SYSTEMS



SlimCeil is an innovative concealed system designed for low-clearance ceiling cavity requirements. It is fully adjustable, cost effective and easy to install.

Ceiling Systems Specifications



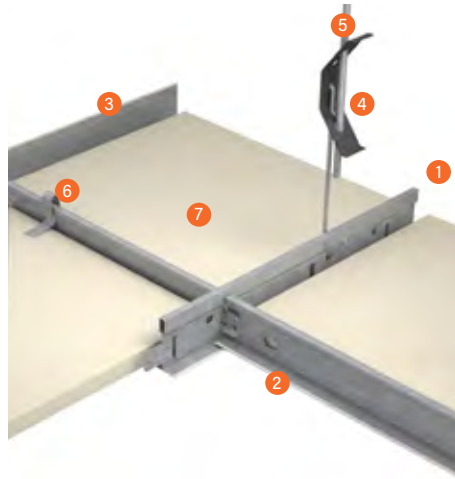
Need Support?

Ceiling specifications for jobs vary project-by-project. We will work closely with you to obtain all relevant details so we can develop a custom and compliant solution to meet your exact requirements.

Use the table to help you find the right ceiling system for your requirements or call our team to discuss your needs.



Exposed grid and tile applications.

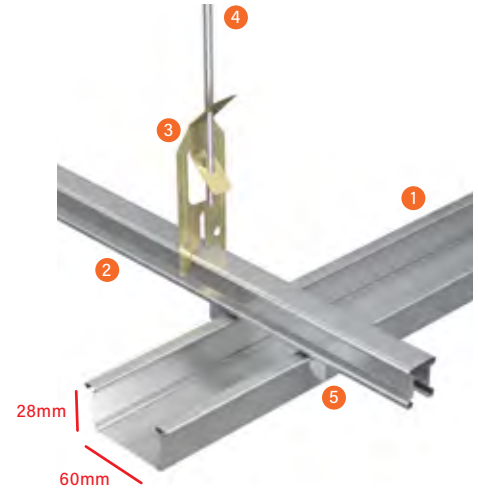


System Details

1. Main Tee
2. Cross Tee
3. Wall Angle
4. Spring Hanger
5. Galvanised Rod – 5mm
6. Tile Hold Down Clip
7. Drop In Ceiling Tile



Suitable for soffits, perforated plasterboard, suspended and direct fix ceilings.



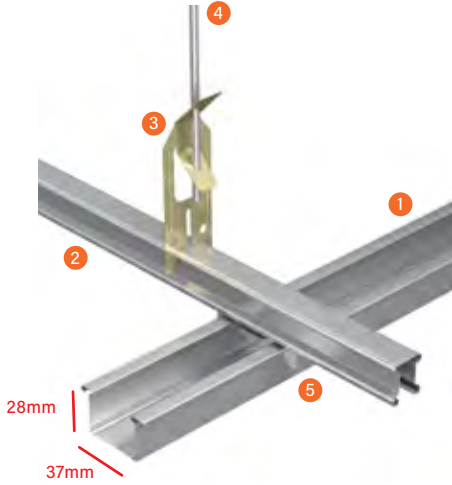
System Details

1. 60mm Wide Furring Channel
2. Primary Channel
3. Spring Hanger
4. Galvanised Rod
5. Locking Key Coupling

Size	24mm Face. All standard profiles - Main Tee, Cross Tees, Wall Angle	Furring channel width: 60mm Furring channel height: 28mm
Applications	Exposed grid and tile applications	Soffits, perforated plasterboard, suspended and direct fix ceiling
Concealed Grid		✓
Exposed Grid	✓	
Drop in Tile	✓	
Perforated Plasterboard		✓
Flush Plaster Ceiling		✓
Expressed Joint Soffit		✓
ResilMount™		
Confined Ceiling Space		
Long Ceiling Drops	✓	✓
Heavy Ceiling Linings		✓

A200 | 28mm Furring Channel
CONCEALED CEILING SYSTEM

Suitable for suspended ceiling subframe for internal linings or soffit linings.

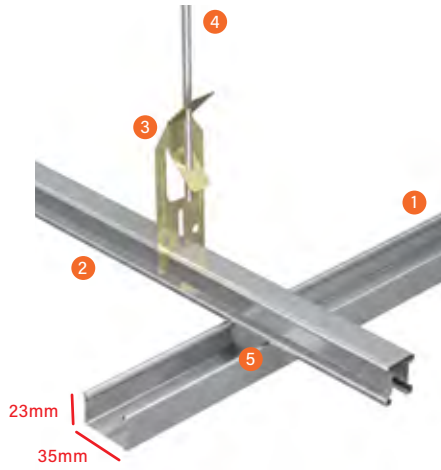


System Details

1. 28mm Furring Channel
2. Primary Channel
3. Spring Hanger
4. Galvanised Rod
5. Locking Key Coupling

B200 | 23mm Furring Channel
CONCEALED CEILING SYSTEM

Suitable for suspended ceiling subframe for internal linings or soffit linings.



System Details

1. 23mm Furring Channel
2. Primary Channel
3. Spring Hanger
4. Galvanised Rod
5. Locking Key Coupling

SLIMCEIL
LOW CLEARANCE CEILING SYSTEMS

Suitable for suspended ceiling subframe for internal linings or soffit linings.



System Details

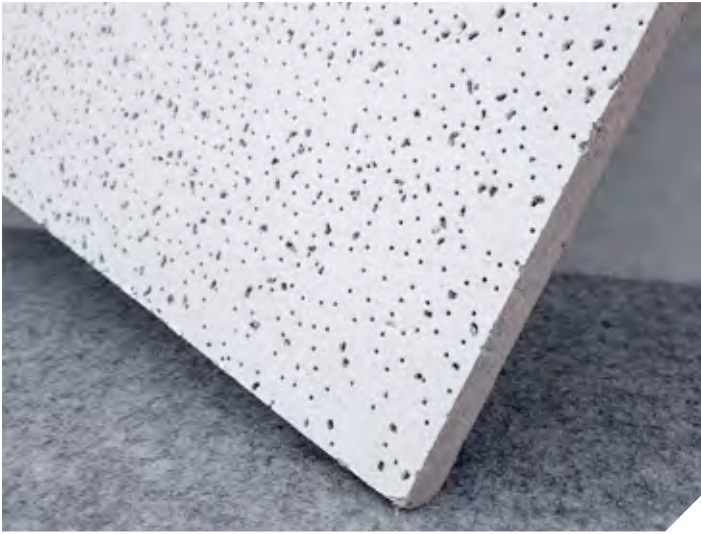
1. SlimCeil Ceiling Bracket
2. SlimCeil Channel
3. Lining Board

Furring channel width: 37mm Furring channel height: 28mm	Furring channel width: 35mm Furring channel height: 23mm	SlimCeil channel width: 51mm SlimCeil channel height: 35mm
Suspended ceiling subframe for internal linings or soffit linings	Suspended ceiling subframe for internal linings or soffit linings	Compact ceiling cavities
✓	✓	✓
✓	✓	✓
✓	✓	✓
✓	✓	✓
✓	✓	✓
✓	✓	✓
✓	✓	✓

NCS Ceiling Tiles

National Ceiling Systems (NCS) are dedicated to the manufacture and supply of a wide range of top-performing ceiling solutions. Combining more than 5 decades of hands-on experience to deliver the best mineral fibre and metal ceilings for acoustic performance, versatility and durability.





Ridge

NCS Ridge is a 16mm acoustic ceiling panel with a non-directional fine fissured face. A cost-effective way to improve acoustics in any space.



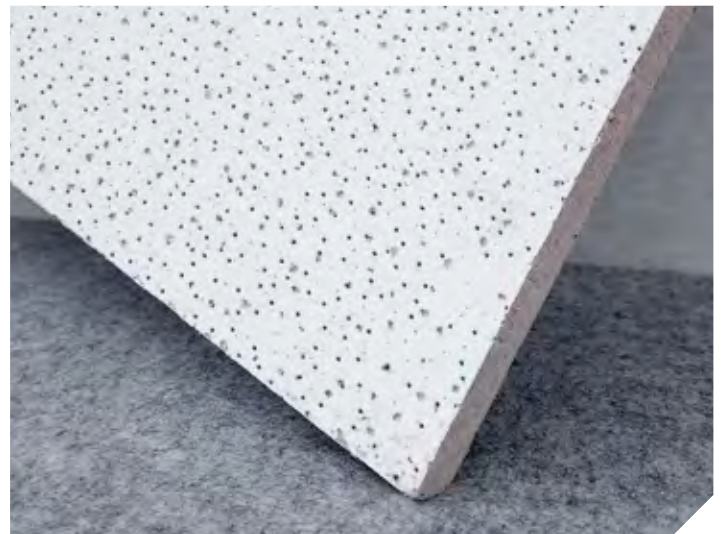
Speq

NCS Speq is a 16mm acoustic ceiling panel with a white, light granulated face and minimal perforation, improving sound absorption and attenuation.



Pinnacle

NCS Pinnacle is a 19mm high performance mineral fibre acoustic ceiling tile with a smooth, white fleece finish that offers great sound absorption (NRC) and attenuation (CAC) qualities. These tiles are ideal for any spaces requiring high acoustic properties.



Apex

NCS Apex is a 16mm acoustic ceiling panel with a white, perforated face, providing great sound absorption and attenuation. Also available in black (Apex Black).

Key Features

- > NCS Tiles come with a 30 year guarantee
- > All tiles are Group 1 Fire Rated
- > Perfectly designed for GT Ultimate Exposed Grid, provide fast, easy installation
- > Available in a range of sizes and edge profiles.
- > Large national stock holdings – eliminates delays waiting on overseas shipments.
- > Strong focus on local manufacturing – reduces lead times for custom or bespoke products.

For full range and accessories visit trumark.com.au/ncs

Metal & Drywall Systems

Trumark is a major partner of Studco offering a range of wall framing systems that are suitable for variety of applications. Trumark can also assist you with engineering services to cover all aspects of documentation and installation compliance.





Steel Stud & Track
(0.55 - 0.75 BMT)



Structural Wall Framing
(1.15 BMT)



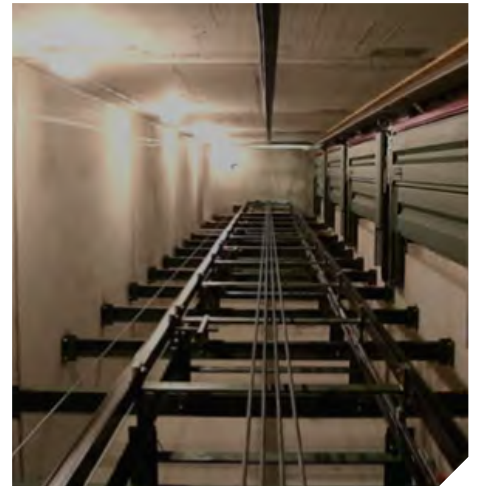
Vortex
High Performance Framing System



HEDA - Structural Wall System



Acoustic Ceiling Systems



Shaftwall Framing Systems



Wall Battening Systems



Brackets



Resilmount Acoustic Brackets

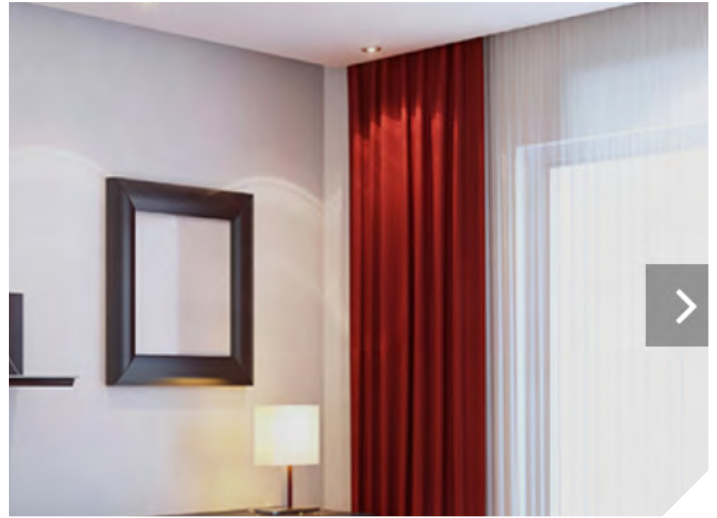
Metal & Drywall Systems

EZ Concept Architectural Finishing Systems are the complete solution for modern buildings, designed to easily create flush-finish walls and ceilings with its range of durable metal sections.





EzyJamb



EzyPelmet



EzyReveal



CavKit



EzyTrack

For full range and accessories visit trumark.com.au/finishing-systems/

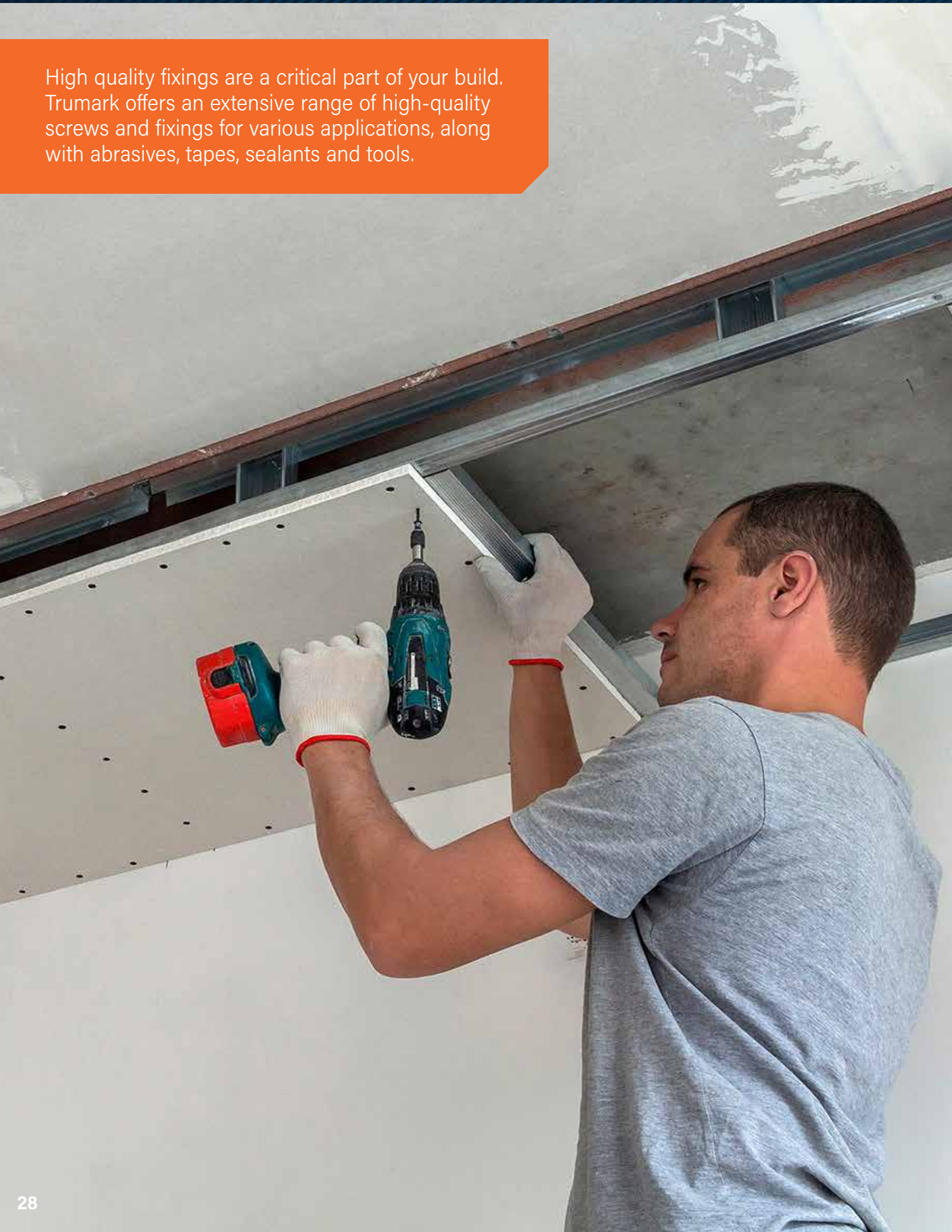
Need Engineering or Technical Advice?

Trumark, together with our experienced suppliers, can help provide specialised engineering support for various essential elements within the building envelope including:

- > Load bearing & non-load bearing wall & ceilings
- > Seismic design
- > Acoustic walls & ceilings
- > Fire-rated walls & ceilings
- > Bulkheads & complex features
- > Top hats & Facade cladding
- > Anti-creaking treatment for tall buildings
- > Modular construction & prefabrication

Fixings

High quality fixings are a critical part of your build. Trumark offers an extensive range of high-quality screws and fixings for various applications, along with abrasives, tapes, sealants and tools.





Screws



Abrasives



Anchors



Rivets



Sealants & Adhesives



Tapes



Tools & Hardware



Safety

For full range and accessories visit trumark.com.au/fixings

Working with Trumark

The Trumark "1%" Principle.

With our team of experienced professionals, our focus is on understanding the individual needs of your build to help shorten your construction journey so you can build quicker, easier & more efficiently. Our range might be similar, but the service you get with Trumark is different. Good different. We don't try to be the biggest supplier on the block, we aim to be the easiest supplier to deal with, every time.

But what makes us different? Well, there isn't just one thing that makes Trumark easier to deal with, it is all the "1 percenters" that we do for our customers to help make their job easier - we call it the Trumark "1%" Principle, and it is the reason we have been in business for so many years.



What makes us different?



We actually listen

We realise it is more valuable to listen to what our customers want rather than to talk too much, so that is what we do.



We know a lot of technical stuff

It is a priority for our team to be available to offer the best technical knowhow when you need it – both over the phone or on site.



We are here when you need us

Sometimes you need a favour and this is where Trumark really shines. From fast tracked orders to late-night callouts, we do what we can to support our customers.



We solve problems

Our team are just a phone call away and can be on-site when required to help find a solution to your product or install issues.



Want to find out more? Call us on 1300 00 50 52
to organise a meeting to discuss your business needs.



Trumark supply building materials to the construction industry.
We specialise in facades, fit outs and fixings.

Head Office & Distribution Centre

50 - 52 Koornang Rd, Scoresby VIC 3179

1300 00 50 52

contact@trumark.com.au

trumark.com.au



Details are correct at time of printing. Images for reference only.
For more information, installation and technical guides, certificates
and warranties visit our website. Copyright ©2022 Trumark.

*Testing in progress at time of printing.